

Data and Analysis

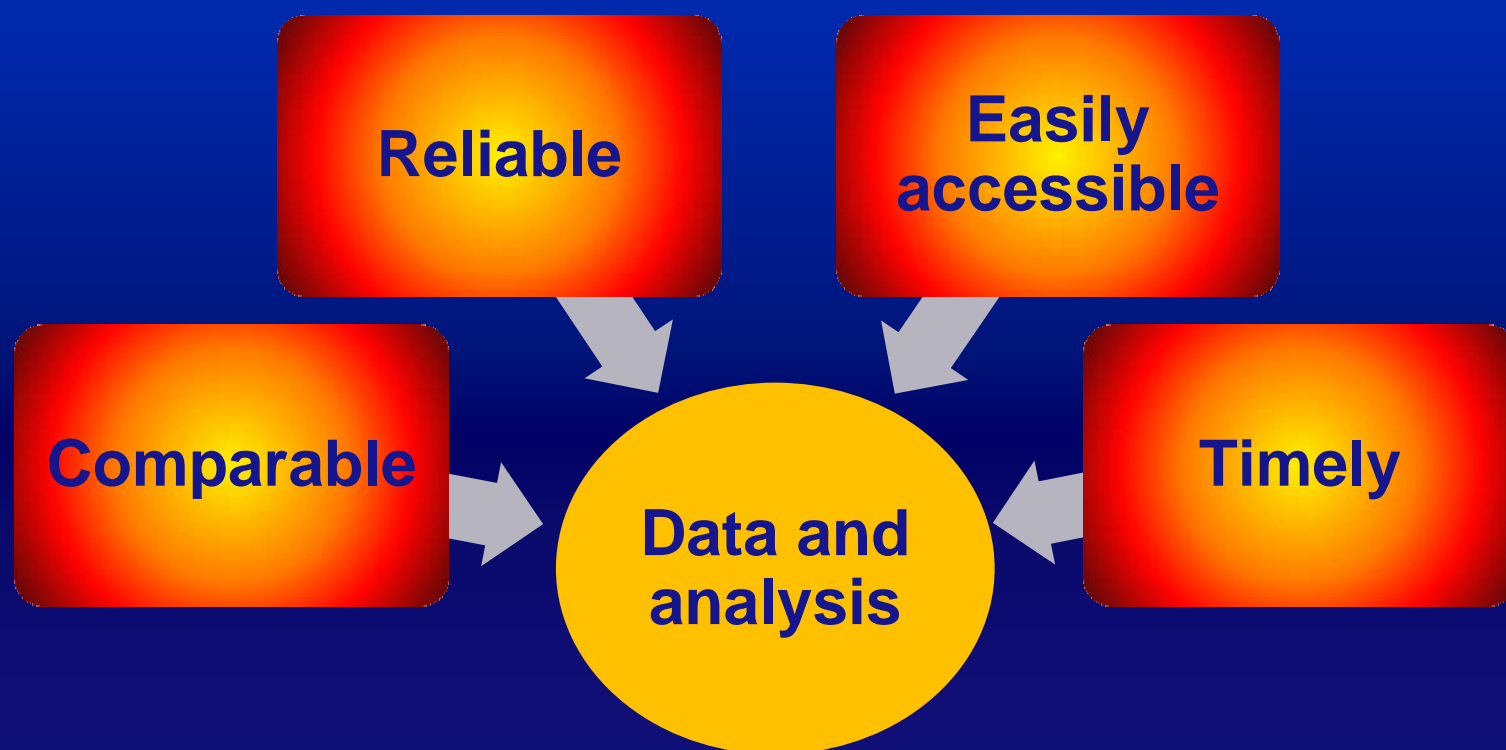
Sabine Henning

**UNDESA
Population Division
United Nations**



Global Migration Group Practitioners Symposium, Geneva, 27-28 May 2010

WE NEED



**For evidence-based policy-making and informed public debate
to better understand and address the
implications of migration for human development
at the national, regional and international levels**

Data Sources

Data Sources

- **Population censuses**
 - 78 countries have conducted censuses in the 2010 round
 - Of which, 59 have gathered information on country of birth or citizenship
- **Administrative sources**
 - Work permits, residence permits, border statistics, visas
- **Surveys**
 - Population or labour force surveys, with or without migration modules

SOF FORM 1

Republic of the Philippines
National Statistics Office
Manila

SURVEY ON OVERSEAS FILIPINOS
October 2006

| | | | |
|----|--|------------------------|----------------------|
| Q1 | What is the name of the family member who is/was abroad? (Take note that the reference period is from October 2001 to September 2006) | Line No. in ISH Form 2 | <input type="text"/> |
| Q2 | What is ____'s relationship to the head of this household? 01 Head 04 Brother 02 Spouse 05 Son-in-law 03 Son/Daughter Daught | | <input type="text"/> |
| Q3 | Is ____ male or female? 1 Male | | <input type="text"/> |
| Q4 | How old is ____ on his/her last birthday | | <input type="text"/> |
| Q5 | How many times did ____ leave for abroad | | <input type="text"/> |
| Q6 | Now, I would like to ask some information about ____ When did ____ last leave? Month _____ | | <input type="text"/> |



2010
Everyone
Counts!

Your Questions
Answered and More!

Data Dissemination

- IPUMS
- Migration Profiles
- Migration and Remittances Factbook
- UNICEF – MigrantInfo....
- UNDESA- International Migration Flows

MINNESOTA POPULATION CENTER, UNIVERSITY OF MINNESOTA

IPUMS International

Home | Variables | Create Extract | FAQ | Contact Us | Login

PROJECT
About IPUMSI
How to Cite IPUMSI
User Registration and Login

DATA
Variables
Create Data Extract
Download Data Extract
GIS and Other Data Files

SAMPLES
Sample Information
Source Documents

RESOURCES
International Partners
World Data Inventory
Microdata Handbook
Bibliography

Integrated Public Use Microdata Series International

census microdata for social and economic research

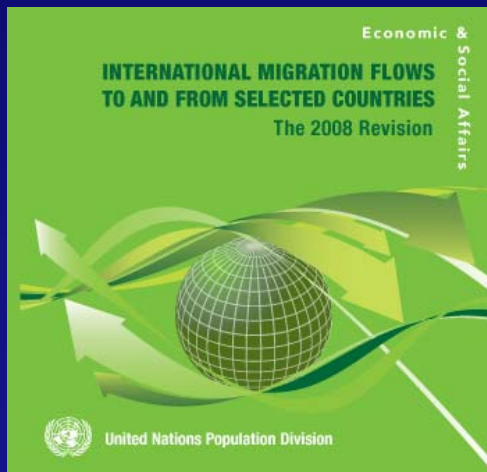
IPUMS-International is a project dedicated to collecting and distributing census data from around the world. Its goals are to:

- Collect and preserve data and documentation
- Harmonize data
- Disseminate the data absolutely free!

44 countries - 330 censuses - 279 million person records

IPUMSI News
IPUMS Research Award
May 2009 data release
NSF extends IPUMS-I
2008 Award Winners
NIH extends IPUMS-I

MPC Data Projects
IPUMS-USA and others



MigrantInfo

Database: MigStock | Data

MigrantInfo
unicef | HOUSTON

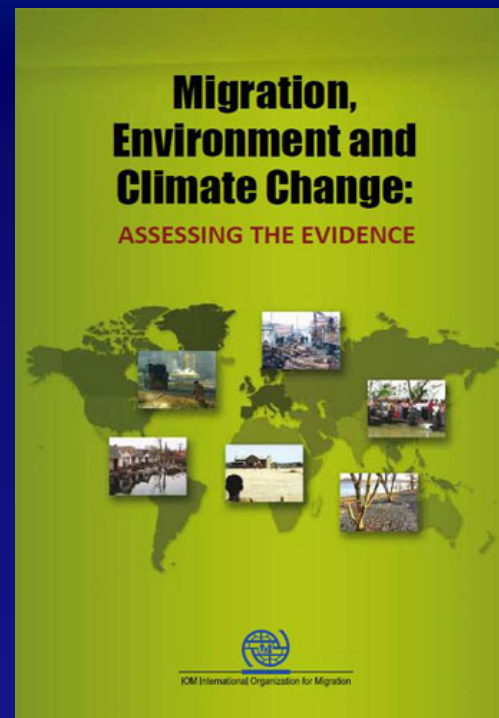
start



United Nations – DESA – Population Division

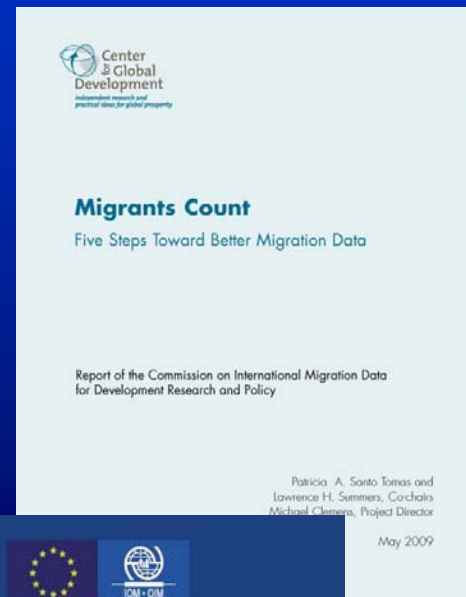
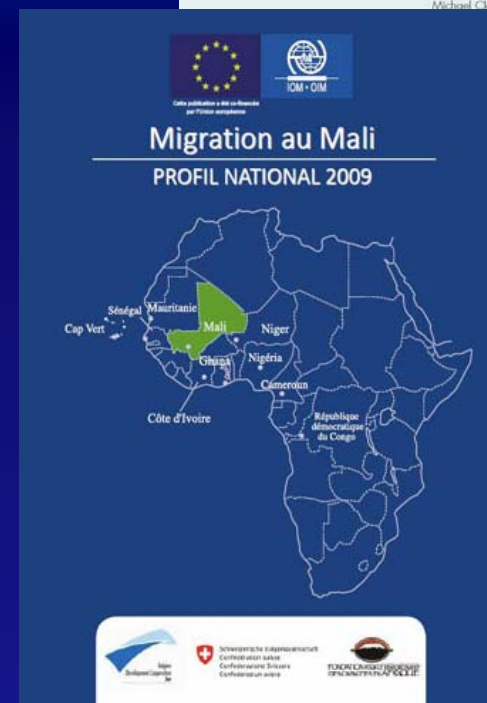
Research/Analysis

- IOM research programme
- World Bank - Remittances
- UNDP - 2009 HDR



Capacity-Building

- CGD - Migrants Count Report
- IOM - Migration Profiles
- ILO - ITC (Turin)

Successful Partnerships

Government Representatives

*(GFMD Ad-hoc Working Group
on Policy Coherence, Data and Research)*

Wider research
community
(UNDP – 2009 HDR)

Data users
(Migrants Count Report)

Global Migration
Group
*(International Migration
and Human Rights Report)*

Data producers
*(RCs-UNDESA
Development Account Project)*

Non-governmental organizations
(Development on the Move – IPPR & GDN)

United Nations – DESA – Population Division

Recommendations for GMG

- **Develop a strategy to advocate for improving the availability and timeliness of relevant data, including data that are underused.**
- **Interact with Governments to:**
 - **Seek support for capacity-building activities**
 - **Conduct advocacy and capacity-building activities**
 - **Strengthen partnerships among stakeholders.**
- **Support the collection, tabulation and timely dissemination of census data.**
- **Develop a joint strategy to engage the wider research community.**

Censuses Ad-hoc Working Group

Definition of an international migrant

Migrants Count Report

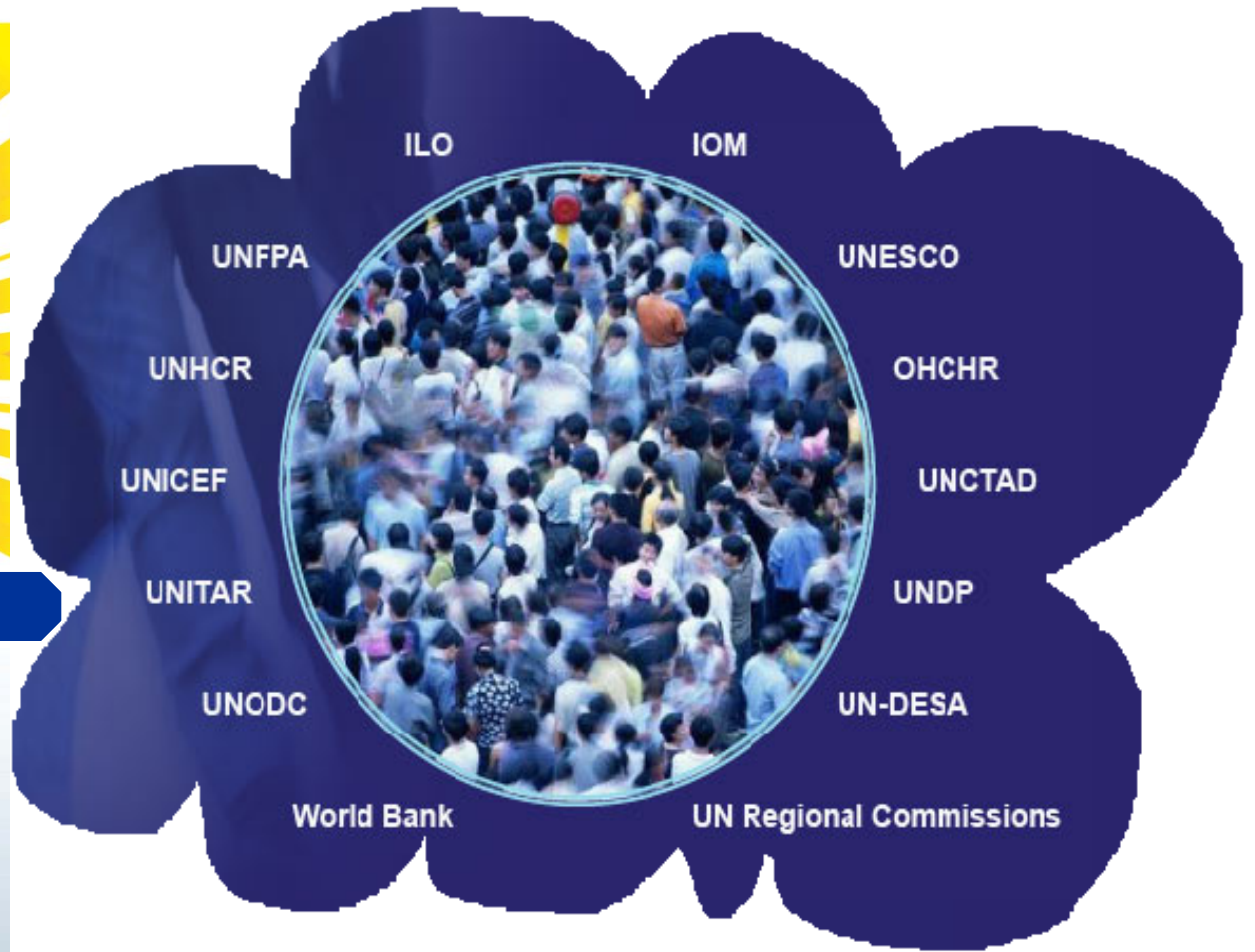
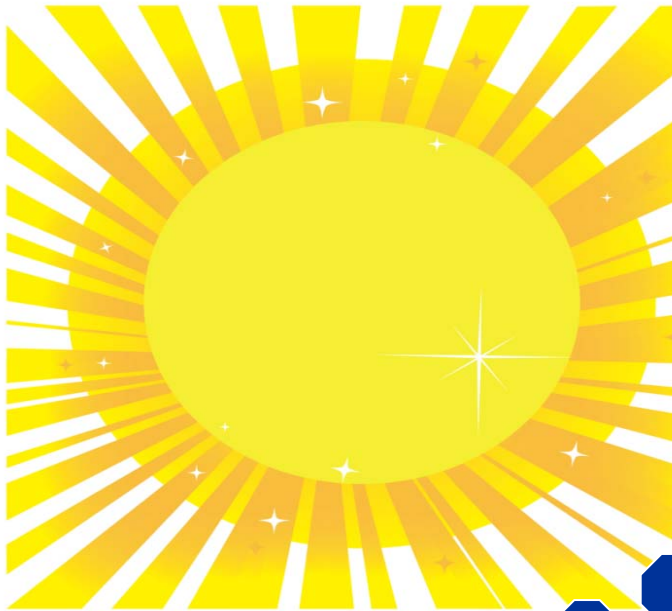
Partnerships

Migration Profiles

Examples of good practice

HLD - 2013





**This is an opportunity ...
let's get to work
together!**