

Global Migration Group (GMG) Symposium

“Migration and Youth: Harnessing Opportunities for Development”

Roundtable 1.2:

**Cooperation – the key to an effective policy response to global
environmental change, migration and youth**

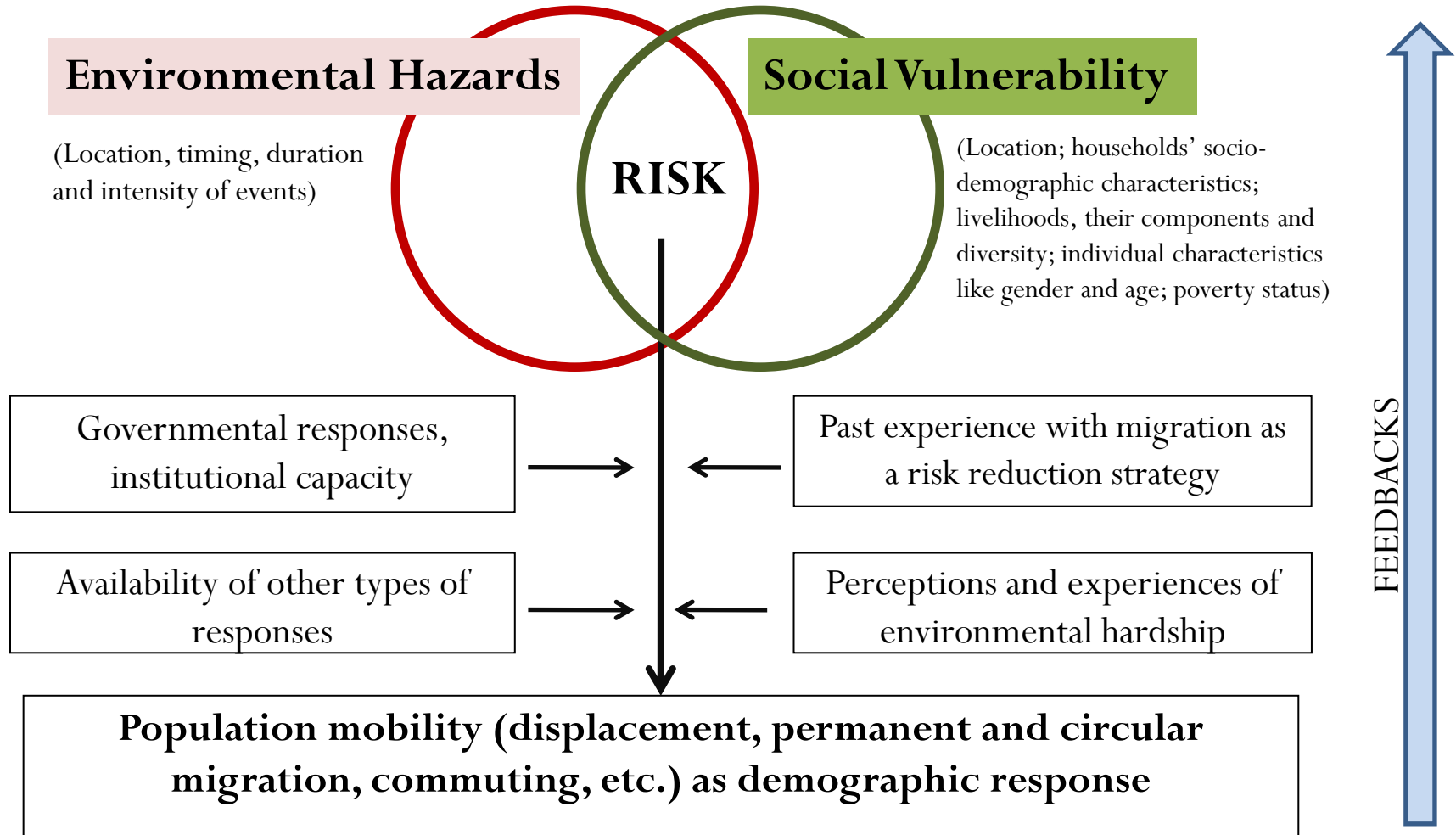
Notes on Environmental Change and Youth Migration

Susana B. Adamo

CIESIN, Columbia University

sadamo@ciesin.columbia.edu

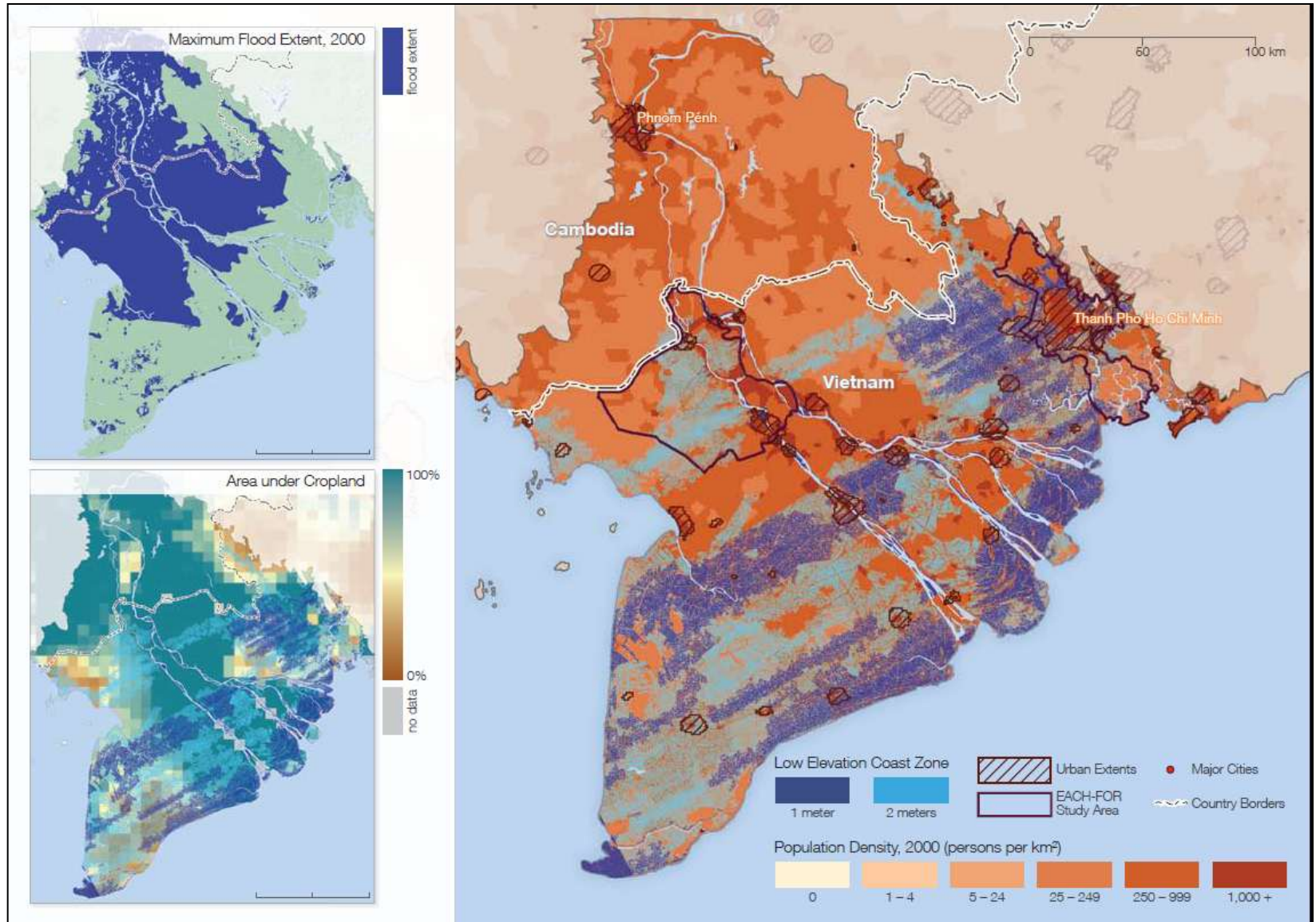
How do environmental factors affect migration decisions?



Migration and climate change: recent findings

- Although economic and political factors are today the dominant drivers of displacement and migration, climate change is already having a detectable effect.
- Large variability: by type of event, place and time, by degree of vulnerability, and by availability of alternative responses (mitigation measures, adaptation in place)
 - Predicted impacts vary substantially by geographic location.
- Overall, probability of displacement is higher in developing countries.
 - Socioeconomic status as predictor, but the effect is not lineal.
- The direction of the flows is uncertain.
 - Importance of previous migration systems and networks.

Example: The Mekong Delta



Source: Warner, K., Erhart, C., de Sherbinin, A., Adamo, S.B., Chai-Onn, T.C. 2009. "In search of shelter: Mapping the effects of climate change on human migration and displacement." A policy Paper prepared for the 2009 Climate Negotiations. Bonn, Germany: United Nations University, CARE, and CIESIN-Columbia University and in close collaboration with the European Commission "Environmental Change and Forced Migration Scenarios Project", the UNHCR, and the World Bank. Pp. 14

How can climate change can affect youth migration?

- Mechanisms:
 - Modifying migration systems already in place;
 - increasing migration flows to cities due to deteriorating conditions elsewhere; or changing destinations because of increasing stress due to water scarcity.
 - Creating new migration systems.
 - Exacerbating existing vulnerabilities, particularly in urban areas:
 - The younger the migrants, the higher the risk, particularly for adolescent girls.



How can climate change affect youth migration?(2)

- Effects in places of origin and destination:
 - Increasing frequency of sudden event leading to displacement;
 - cities are increasingly exposed to the impacts of GEC events (secondary migration)
 - Affecting livelihoods (at the household level)
 - Rural households are threatened by the breakdown of ecosystem-dependent livelihoods
 - Affecting the structure of opportunities (at the community level): employment, education, etc.

